

LUTHER CREST *Lifestyles* AUTUMN 2007

BRIDGEGATE

NEW APARTMENTS TO OFFER COMFORT AND CONVENIENCE

Southgate is sold out! But don't worry—
Bridgagate at Luther Crest will offer 42 new
luxury apartments that will connect you with
all the lovely amenities and conveniences on
the Luther Crest campus.

This next phase in the expansion under
way on the Diakon Lutheran Senior Living
Community is expected to
open in 2009.

1 On The Cover

New apartments to offer
comfort and convenience

2 From the Executive Director

Recent renovations help to make Luther
Crest a vibrant community

3 SouthGate Sold Out!

Residents settle into a charming neighborhood

4 To Learn More...

Call (610) 391-8229 or toll-free,
1-800-606-3424



Please turn to back page...



LUTHER CREST

A DIAKON LUTHERAN
SENIOR LIVING COMMUNITY

A NOTE FROM THE EXECUTIVE DIRECTOR



Look closely at Luther Crest and you will see a vibrant community that continues to evolve.

With the final homes in Southgate reserved and landscaping of the new neighborhood under way, our newest residents are quickly

becoming an active part of our community. At the same time, we are moving into high gear with development of our Wellness Center and pool.

Not only will this effort reposition our community for the future, but it also will provide top-notch services and amenities to our current resident population, especially for those “pioneers” who have shared our vision from the beginning.

After construction on the Wellness Center is under way, the next phase of expansion will be Bridgegate. This new neighborhood will form “bridges” to connect our four existing apartment buildings. Landscaped courtyards, easier access from building to building, climate control, and more resident storage areas are just a few of the amenities to be offered in these new apartments.

Equally important are the architectural plans that will provide for the expansion and renovation of our health-care center and assisted living community, as well as the addition of a memory-enhancement care center. Part of these renovations will include relocation of services such as therapy, podiatry, and dentistry into closer proximity for our senior living residents.

We will roll out these enhancements, as well as upgrades to the Commons area, in phases over the coming years. This phased-evolution is part of a long-term plan that recognizes we must continually evaluate the assets in our community and how we can better meet the changing expectations of the residents and staff we serve.

If you want to learn more about what is happening at Luther Crest, I invite you to visit us. The best way for you to understand the evolution under way is for you to see our campus firsthand. I look forward to meeting you.

Jeanne Oski

EXECUTIVE DIRECTOR

If you are interested in exploring the possibility of active senior living at Luther Crest, contact John Kotsatos today at (610) 391-8227 or toll-free at 1-800-606-3424.

LONG-TERM PLANNING HAS ITS REWARDS FOR DEVELOPMENT EXECUTIVE



As Diakon Lutheran Social Ministries' vice president of project planning and implementation, Tim Reed is responsible for overseeing the organization's major construction and renovation projects.

It's a good fit for the Chester County resident who held a similar position with another mission-oriented non-profit before joining Diakon just over two years ago. "The management team at Diakon is very astute, quick learners," he says appreciatively. "They ask for opinions and make decisions."

The opinions that Reed and his staff offer are based on sound market research and industry knowledge. "I run a meeting with the project development team in which we talk about all kinds of issues and the next steps for each project," he says. "Every time we move to the next step, we re-analyze our decisions to make sure it is the right thing to do."

That was the case in the work under way on the Luther Crest campus. With Southgate completed, he is overseeing development work for the campus's Wellness Center, the new Bridgegate community, and the health center. With so many projects on his plate at one time, Reed admits it is a juggling act.

"I just have to stay focused on whatever it is that I am doing and think ahead. What is coming next? What do I have to do to be ready for it?"

But the quick pace is something on which he thrives. "I really enjoy what I do," he says. "The end result is so rewarding to see people get homes and facilities that they want."

SOUTHGATE AT LUTHER CREST SOLD OUT!

Residents settle into a charming neighborhood.

The final home has been reserved and landscaping is under way at Southgate at Luther Crest, the distinctive community of 22 homes on the campus of Luther Crest.



The new, tastefully designed neighborhood is just steps from Luther Crest's dining room and lounges, the campus's Medical Arts Building, and the site of the planned Wellness Center and pool. Best of all, the peaceful neighborhood is convenient to shopping, dining, and the cultural and social amenities of the Lehigh Valley.



LUTHER CREST

A DIAKON LUTHERAN
SENIOR LIVING COMMUNITY

Continued from front page

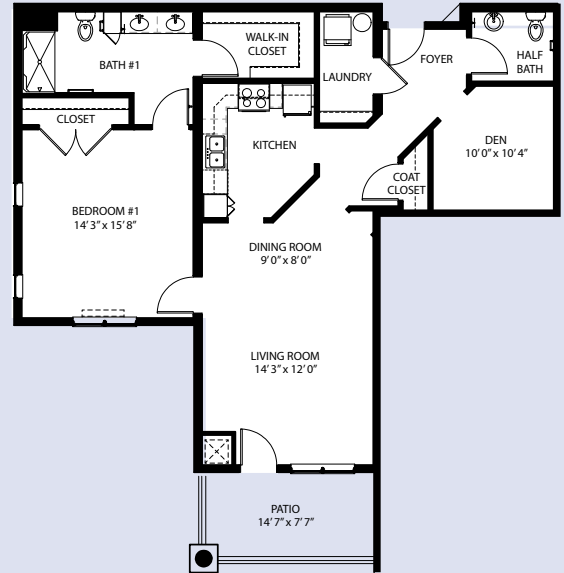
NEW APARTMENTS TO OFFER COMFORT AND CONVENIENCE

Designed for comfort, Bridgegate will offer five unique apartment styles. For convenience, the new residences will be connected to the amenities and services of Luther Crest's Community Center via tastefully decorated, climate-controlled hallways and lounge areas.

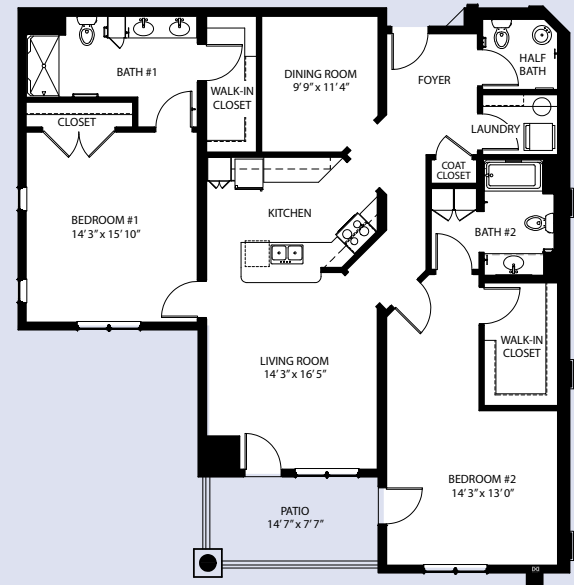
Anyone who makes a specific deposit on a Bridgegate apartment will be placed on a priority reservation list to be one of the first to select their apartment layout and location.

If you are interested in exploring the possibility of active senior living in Bridgegate at Luther Crest, contact John Kotsatos today at (610) 391-8227 or toll-free at 1-800-606-3424.

Rosemont



Fenwick



LUTHER CREST

A DIAKON LUTHERAN SENIOR LIVING COMMUNITY

800 Hausman Road
Allentown, PA 18104