

BUFFALO VALLEY Lifestyles

ISSUE 1
2008

COUPLE FINDS SENIOR LIVING AT BUFFALO VALLEY SATISFYING

Deciding the right time to move to a senior living community can be difficult for active adults. But for the Rev. David Bomboy, a retired Lutheran minister, and his wife, Betty, the decision was an easy one.

“We came here to *live*,” says Betty. “It is a great life—no grass mowing, no snow shoveling, and no worries about appliance maintenance.”

For 15 years the Bomboys have been active members of the Buffalo

Valley Lutheran Village community. During that time, they have built enduring friendships and enjoyed an energetic lifestyle.

“We have great neighbors who have many of the same interests that we have,” says Betty, who, as a member of the social committee, helps plan the village’s varied activities.

“Ours is a busy life, but we are busy doing the things we *want* to do—not the things we *have* to do.”

1 On the Cover

Couple finds senior living at Buffalo Valley satisfying

2 From the Executive Director

Buffalo Valley offers a ‘well-made’ life

3 Expansion Offers Carefree Lifestyle

Buffalo Valley plans to expand

4 To Learn More...

Call (570) 524-2221 or
(570) 524-5520



The Bomboys



BUFFALO VALLEY
LUTHERAN VILLAGE

A DIAKON SENIOR LIVING COMMUNITY

A NOTE FROM THE EXECUTIVE DIRECTOR



Buffalo Valley offers a 'well-made' life

An active, fulfilling retirement is what you can expect when you move to Buffalo Valley Lutheran Village. Situated away from the thoroughfare, we are one of the best-kept secrets in the Susquehanna Valley.

Our residents enjoy life in a close-knit community where staff members make a point of knowing each resident. The neighboring town features a variety of unique shops, as well as year-round celebrations, including spring concerts, art festivals, and an annual 4th of July parade supported by every citizen. Nearby universities, such as Bucknell and Susquehanna, also provide an active social outlet for concerts, the arts, and sporting events.

When we break ground this fall on the first phase of a three-phase expansion of our senior living accommodations, the work will be the culmination of a process that has included the efforts of many people—people who are dedicated to providing the best service for our residents. We are thrilled with this expansion and want to share our plans with you.

I invite you to stop in soon and see for yourself why Buffalo Valley Lutheran Village has all the unique ingredients of a well-made life.

I look forward to meeting you.

LENNEA BROWN

EXECUTIVE DIRECTOR

MARKETING MANAGER FINDS FULFILLMENT IN HER NEW ROLE

Amy Solomon has worked for Buffalo Valley Lutheran Village for less than one year, but it didn't take long for the manager of marketing and sales to find her comfort zone.

Before joining Buffalo Valley, Solomon worked for Giant Food Stores for 15 years, most recently as a store manager in Shamokin Dam. It was while working there that she learned of the opportunity to join the staff of the expanding senior living community.

"I'm so glad I made the change," says Solomon, who admits she had been looking for the next step in her career. "The residents and staff have helped to make my transition quite smooth. They are wonderful people."

Solomon, who lives in New Columbia with her husband and two children, says she heads home each night feeling fulfilled with her job as the main point of contact for every adult considering senior living at Buffalo Valley.

"I feel as if I'm doing some good for the community," she says. "The people around me, the new friendships I've made, make it all worthwhile."



BUFFALO VALLEY EXPANSION OFFERS CAREFREE LIFESTYLE

With more and more active adults seeking a lifestyle free of the hassles of home ownership, Buffalo Valley Lutheran Village recently announced plans to expand.

Anticipating a fall 2008 construction start, the expansion will include all-new homes that feature attractive floor plans, with plenty of living space conveniently located on one level. Residents can choose from three styles—the Ashford, Belmont, or Hastings—and customize their next home to reflect personal tastes and lifestyles.

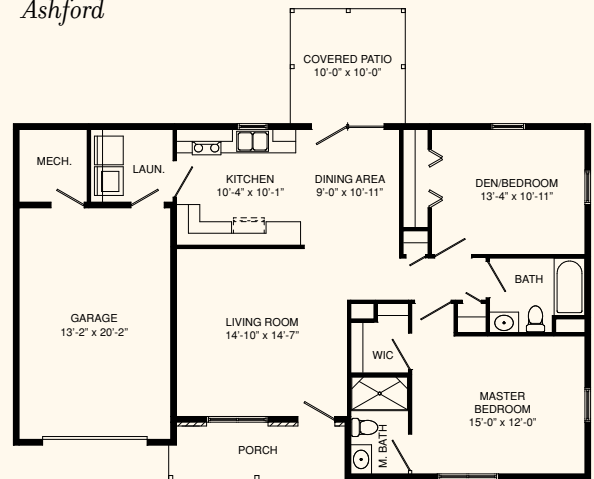
“Everyone will enjoy the privacy of their own home without the hassles of home-ownership,” explains Amy Solomon, manager of marketing and sales. “Our professional staff handles all aspects of upkeep, including appliances, building maintenance inside and out, lawn care, snow removal, leaf collections, and landscaping.”

Residents also will appreciate the village’s premium location in Lewisburg, with the cultural and educational offerings of several nearby universities. Additionally, an active social committee led by a vibrant and diverse group of residents means even more opportunity to experience life to its fullest.

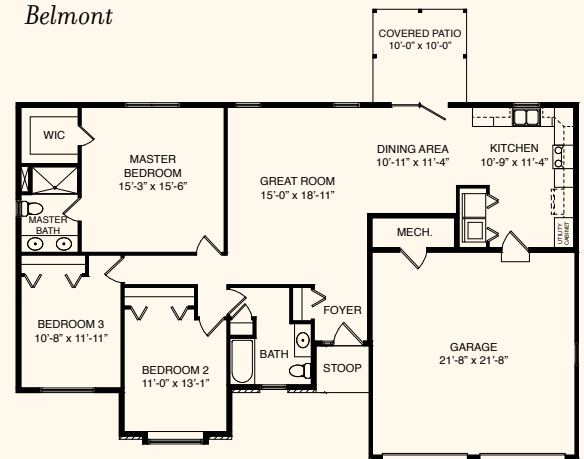
For additional information or to schedule a personal appointment, please call (570) 524-2221 or (570) 524-5520.

If you are interested in exploring the possibility of active senior living at Buffalo Valley, contact Amy Solomon today at (570) 524-2221 or (570) 524-5520.

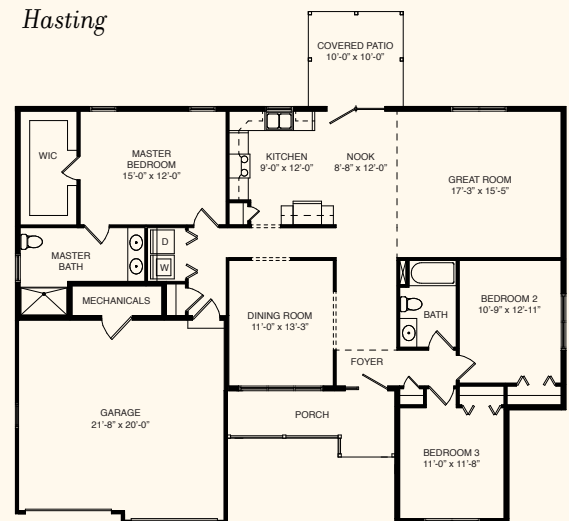
Ashford



Belmont



Hasting



**BUFFALO VALLEY
LUTHERAN VILLAGE**

A DIAKON SENIOR LIVING COMMUNITY

CHARTER MEMBER PROGRAM OFFERS ADVANTAGES WITH EARLY DEPOSIT



With only 19 homes planned for the first phase of Buffalo Valley Lutheran Village's expansion of senior living accommodations, the chance to be among the adults who will enjoy an active and fulfilling retirement in this beautiful new neighborhood is limited.

However, those who are among the first 70 percent to make a fully refundable 10 percent deposit can reserve their preferred style of residence and take advantage of the significant benefits of Charter Membership.

Those benefits allow you to enjoy the following:

- Lock in pre-construction pricing
- Receive a \$1,500 credit toward options and upgrades
- Gain three hours of moving assistance
- Receive free monthly guest meals before moving in
- Be a guest at all campus activities and special events

For additional information or to schedule a personal visit, please call (570) 524-5520.



**BUFFALO VALLEY
LUTHERAN VILLAGE**

A DIAKON SENIOR LIVING COMMUNITY

889 Fairground Road
Lewisburg, PA 17837